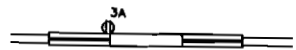


NOTES:

- 1) ALL CIRCUITS SHOWN ARE FOR REFERENCE AND MAY BE CHANGED BASED ON OPTIONAL COMPONENTS INSTALLED IN THE HOME.
- 2) REFER TO EL SECTION OF THE DAPIA FOR SYMBOL CHART.
- 3) INDICATES EITHER LIGHT OR RECEPTACLE MUST CONNECT TO SWITCH.
- 4) EF-1= 50 CFM EXHAUST FAN REQUIRED FOR THERMAL ZONE III THERMAL ZONES I & II MAY USE FAN OR WINDOW W/1.5 SQ. FT. OPENABLE GLASS.
- 5) EF-2= 50 CFM EXHAUST FAN REQUIRED THERMAL ZONE I, II, AND III.
- 6) EF-3= 100 CFM RANGE EXHAUST FAN, SWITCH AT HOOD.
- 7) EF-4= WHOLE HOUSE VENTILATION PER REQUIREMENTS IN S-HV-10 & 10A OR M-HV-11 & 11A OF DAPIA.
- 8) REFER TO EL SECTION OF THE DAPIA OR THE MFG. INSTALLATION INSTRUCTIONS FOR PROPER WIRE SIZE AND BREAKER SIZE FOR SPECIFIC APPLIANCE AND MODEL BEING INSTALLED.
- 9) ALL SMOKE DETECTORS ARE LOCATED ON THE CEILING.



OPT. PICTURE WINDOW

CIRCUIT	CIRCUIT #	WIRE	BREAKER	CIRCUIT	CIRCUIT #	WIRE	BREAKER
LIGHT/RECEP	1A,B,3A,B,14A,B	14-2	15-SP	FURNACE	6A,8A,B,10A,B	SEE NOTE #8	
KITCHEN	2A,2B	12-2	20-SP	OPT D/WASH	9A	SEE NOTE #8	
WASHER	12A	12-2	20-SP	OPT G/DISP	9B	SEE NOTE #8	
DRYER	5A,7B	SEE NOTE #8		OPT SPA OR WP OR JAC	11A,B	SEE NOTE #8	
WATER HEATER	4A,6B	SEE NOTE #8					
RANGE	5B,7A	SEE NOTE #8					
SMOKE DETECTORS	4B	SEE NOTE #8					

FP-28-2604

Clayton MOBILE HOMES	Model #: AVD28643D	Drawing #:
	Date: 07.06.04 Scale: 1/8" = 1'-0"	25M01B
Product Designer: AMY MCMAHAN	28'x64' AVONDALE	
ELECTRICAL PLAN SD		Rev: